

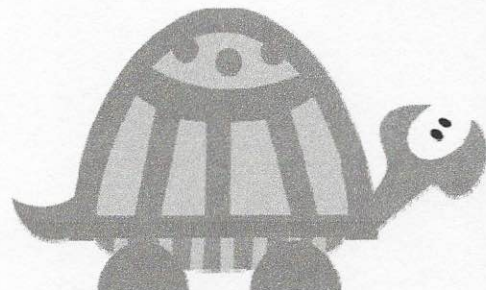
Name \_\_\_\_\_

Date \_\_\_\_\_

### Pythagorean Theorem Word Problems- Independent Practice Worksheet

Complete all the problems.

1. Find the hypotenuse of a triangle with a base of 11 cm and height of 9 cm.



2. Tommy the Turtle wanders off in the zoo. Mr. Gorilla saw him walk to the "T" on Clancy Road and make a right. The T is 1.2 miles from Tommy's pen. Gilbert Giraffe saw Tommy sitting outside the giraffe area. The giraffe area is 1.6 miles from the "T". Exactly how far is Tommy the Turtle from his pen?

3. Tom is afraid of heights above 9 feet. He is asked to repair a side of a high deck. The bottom of a ladder must be placed 6 feet from a deck. The ladder is 10 feet long. How far above the ground does the ladder touch the deck? Is Tom afraid of the height?

4. Maria walked 3 km west and 4 km south. Calculate how far she is from her starting point.

5. Lena's guest house is 15 m long and 12 m wide. How long is the diagonal of the house?

6. David leaves the house to go to school. He walks 200 m west and 125 m north. Calculate how far he is from the starting point.

7. Laptop screen sizes are determined by the length of the diagonal portion of the screen, rounded to the nearest whole number. A laptop screen has a 10 inch width and the height measures 8 inches. Calculate the screen size.



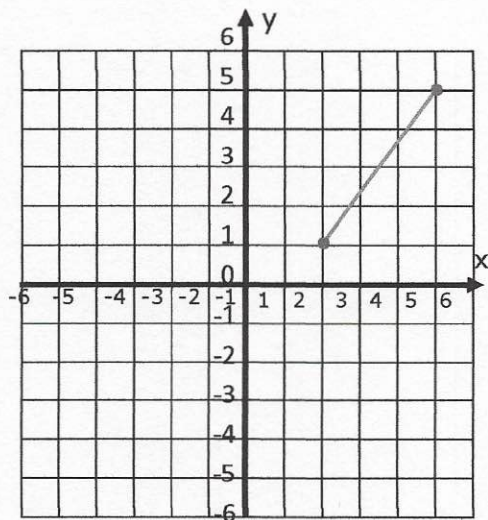
Name \_\_\_\_\_

Date \_\_\_\_\_

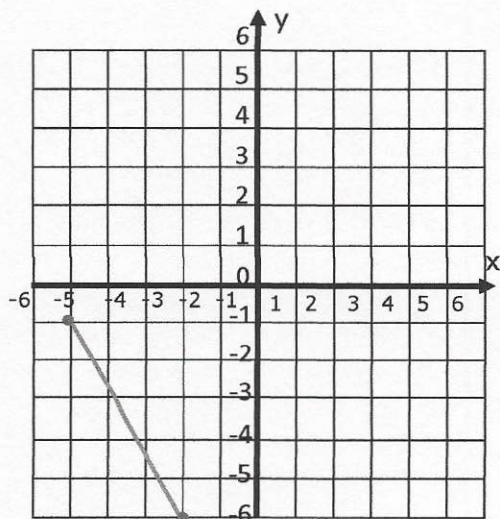
### Pythagorean Theorem On Coordinate Systems - Independent Worksheet

Find the distance between all the points listed below.

1.



2.

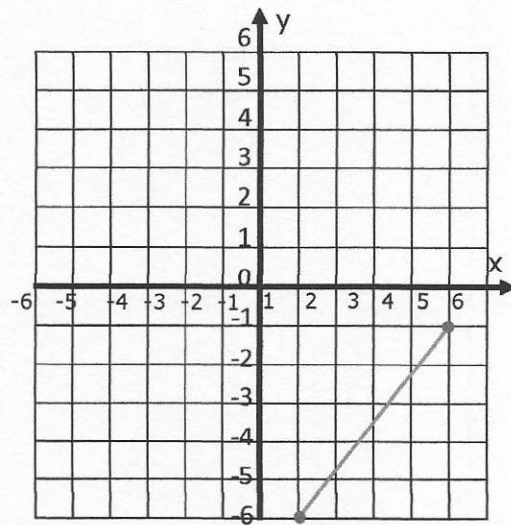




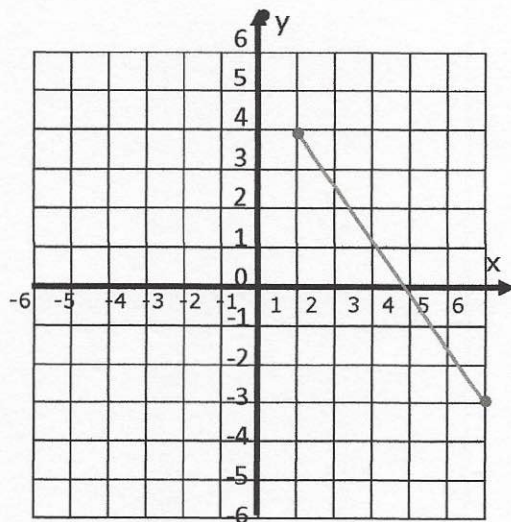
Name \_\_\_\_\_

Date \_\_\_\_\_

3.



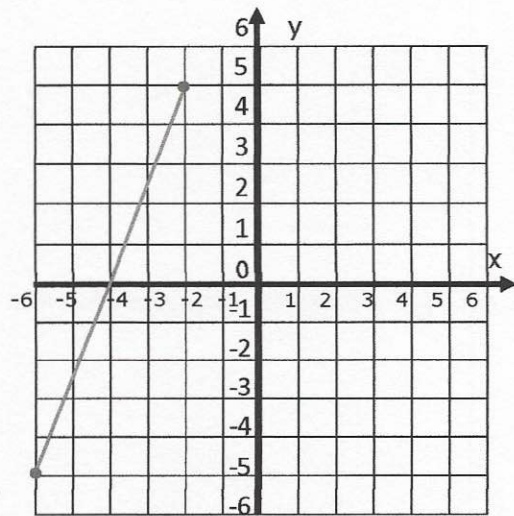
4.



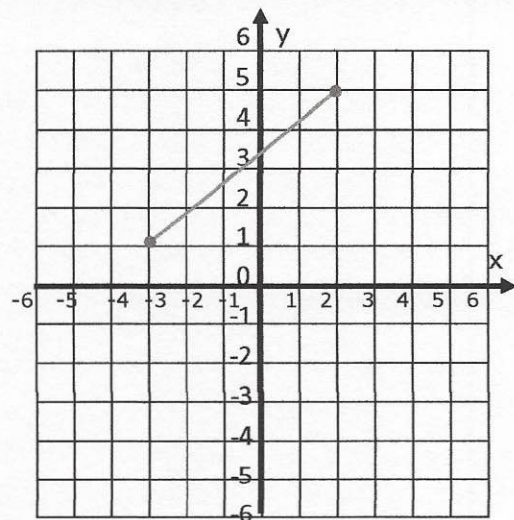
Name \_\_\_\_\_

Date \_\_\_\_\_

5.



6. Find the distance between  $(5, 2)$  and  $(1, -3)$ .

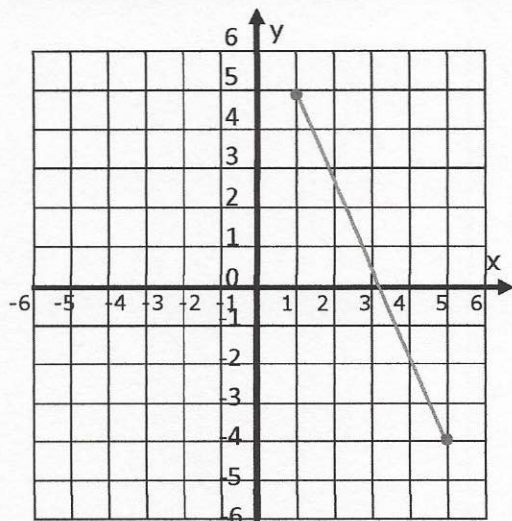




Name \_\_\_\_\_

Date \_\_\_\_\_

7. Find the distance between  $(5, 1)$  and  $(5, 4)$ .



8. Find the distance between  $(5, 3)$  and  $(1, 3)$ .

